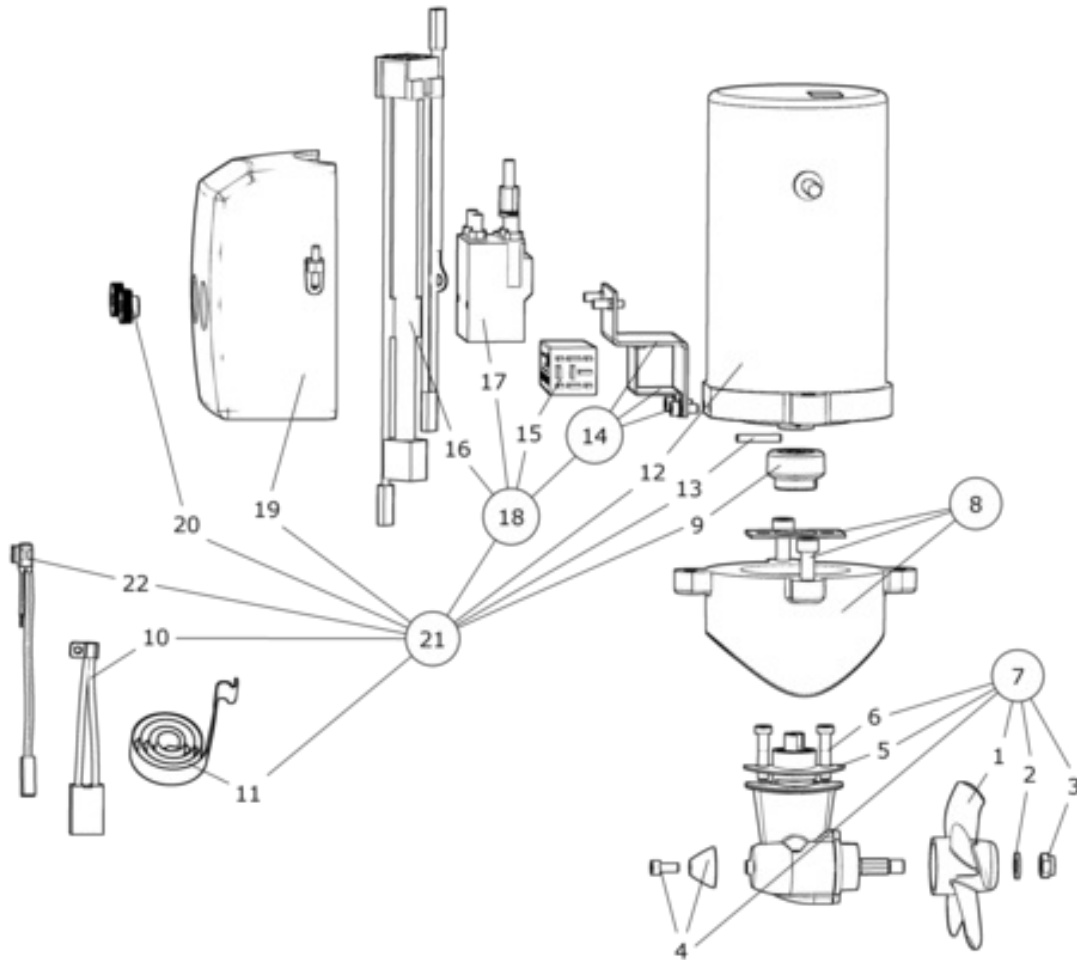


SE20/110S - SE20



Tunnel thruster, 12V

Spare parts (valid from 2019-06-07)



#	Description	Product
1	Propeller	125960
2	Propeller washer	208125 - washer DIN125A M8 A4 (SB)
3	Locknut	3 1250 - Locknut
4	Anode	3 1180 A - Alu anode SE30/40
5	Gasket	3 1310 10 - Gasket between tun./brak. SE40
6	Gearleg bolt	110031 - Skrue Torx M3x6 Pan, Elzn
7	Complete gearleg	2 0600 - Gearleg complete SE25
8	Complete motor bracket	SM-126302 - Complete motorbracket SE20/25
9	Complete flexible coupling	SM-128472 - Compl. flex coupl SE20/25/30S2/40S2
10	Brushes for motor (kit)**	**
11	Brush springs for motor (kit)**	**
12	Electric motor	N/A
13	Key for electric motor shaft	112032 - Motor drive pin 4x28mm SE20..40S2
14	Solenoid bracket kit	2 0135 - Solenoid bracket kit SE30
15	Electronic control box	6 1232 I - Delay relay 12/24V, new type
16	Internal wiring loom	6 1200 B - Internkobling SE30
17	Solenoid	41571123 - Solenoid kit compl SE30
18	Complete solenoid kit	2 0131 12 - Solenoid kit compl SE30
19	Solenoid Cover	3 2024 - Reledeksel SE30
20	Nut for solenoid cover	6 8810 - Nut for solenoid cover
21	Complete electric motor assembly	2 0105 12 - Elektromotor mont SE25-12V
22	Temp switch*	*

The installer alone has responsibility for the installation of the spare parts. Side-Power only warranty the spare parts supplied only.

The information given in the document was correct at the time it was published. However, Sleipner Motor AS can not accept liability for any inaccuracies or omissions it may contain. Continuous product improvement may change the product specifications without notice. Therefore, Sleipner Motor AS can not accept liability for any possible differences between product and document.